

USPSA HANDGUN RULES

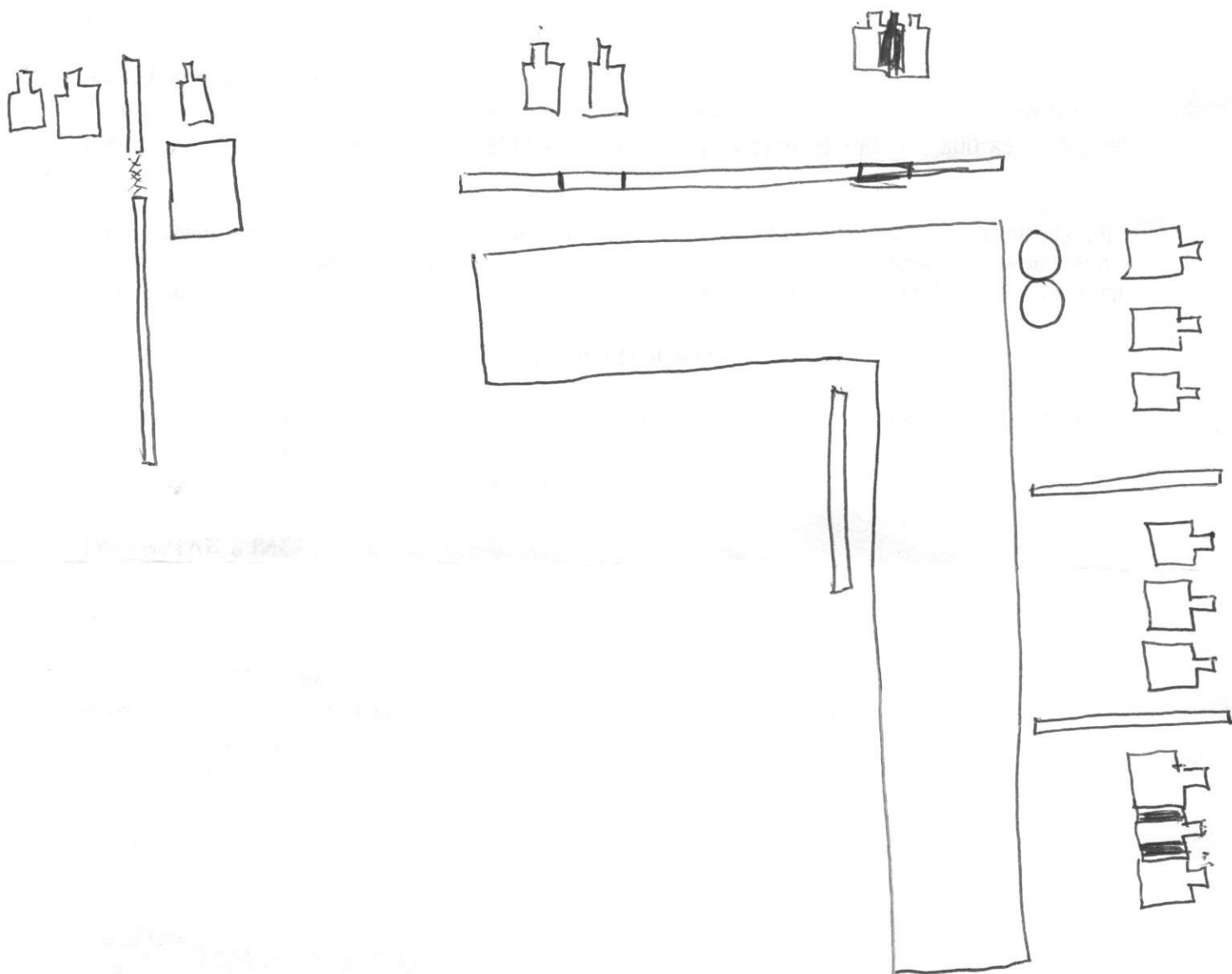
START POSITION : IN BOX "A" HAND RELAXED AT SIDES
GUN LOADED & HOLSTERED

STAGE PROCEDURE : ENGAGE TARGETS WHEN VISIBLE
IN SHOOTING AREA

SCORING : COM STOCK , 32 POUNDS , 160 PTS

TARGETS : 16 METRIC

SEVEN HITS ; BEST 2 ON PAPER



A

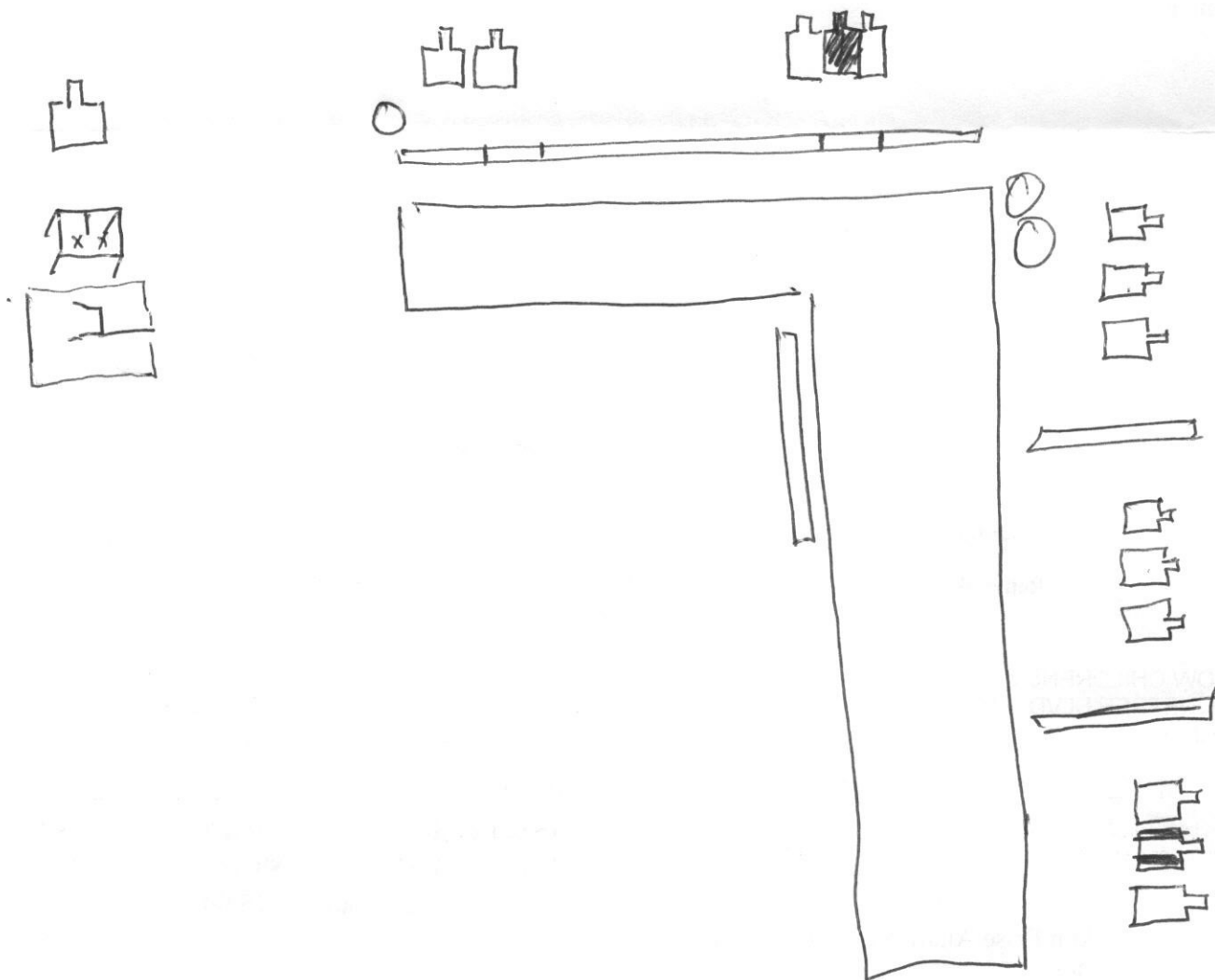
"THE RANGE"

USPSA HANDGUN RULES

START POSITION: GUN ON TABLE UNLOADED WITH FIRST TAG ON TABLE, SHOOTER SITTING DOWN HANDS ON X

STAGE PROCEDURE: ENGAGE TARGETS WHEN VISIBLE IN SHOOTING AREA, FIRST TARGET WHILE SITTING

SCORING: WOODSTOCK, 28 ROUNDS, 140 PTS
14 TARGET (METRIC) BEST 2 ON PAPER



"BACK IS UP"